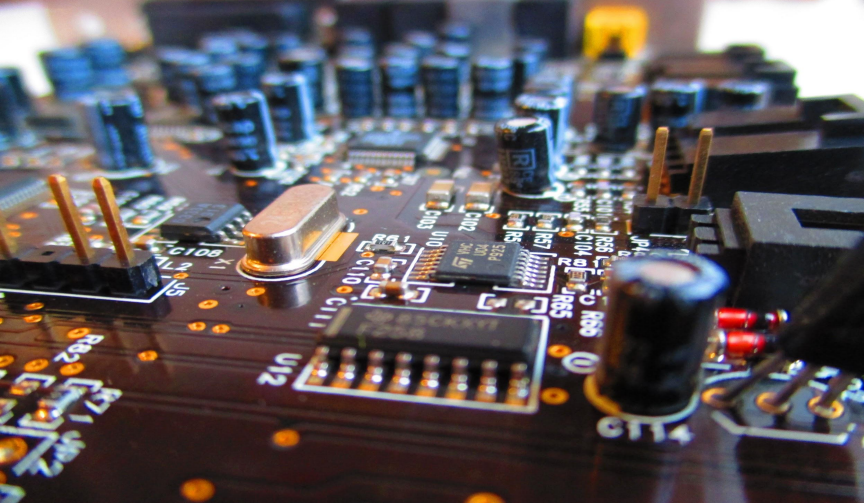


# ACCURA ELECTRONICS

## CORPORATE BROCHURE

34, GIDC INDUSTRIAL ESTATE, WAGHODIA – 391760  
DIST: - VADODARA, STATE: - GUJARAT,  
COUNTRY: - INDIA  
GSTIN:- 24AEQPR8511P1ZP



PH: +91 9824067427

EMAIL: [pareshrupera@accuraelectronics.com](mailto:pareshrupera@accuraelectronics.com)

---

# ABOUT US:

---

We are providing professional PCB assembly job work for SMT, through-hole and mixed (SMT & through-hole) projects.

We have been providing PCBA job work for many companies involved in fields such as telecom, security, medical devices, consumer electronics, power electronics, EVs, process control instruments and many more.

We have a vast experience and capability dealing with job works for sub-contracting companies that deal with manufacturing of through hole as well as SMD types of PCB boards that are made for companies based in the USA, UK and other European countries.

We have a very well qualified and experienced team capable of working on any type of complex projects. We are recognized in the industry for maintaining quality standards and commitment to customer satisfaction.

**We also conduct our operations at our second organization under the name of 'SHREE ELECTRONICS' (Founded in 1999).**

# SMT Assembly Capabilities:

Low Volume to High Volume, Low Density to High Density, boards with mix component varieties?

Don't worry we got you covered!

Our inventory consists of 8 pick-and-place machines combined from our two organizations from brands like JUKI, Philips and Yamaha distributed among 4 SMT production lines.

Brand of Pick-and-place machines.	No. of machines
JUKI	3
PHILIPS	3
YAMAHA	2

## SMD Soldering Capabilities:

<b>Component Type</b>	SMT, Through-hole & Mix (SMT & TH)
<b>Type of Solder Paste Used</b>	RoHS or Tin-Lead
<b>Component Size Packages</b>	01005 to Micro-BGAs
<b>Component Packaging</b>	Reel, Stick/Tube & Tray
<b>Board Dimensions (In Range)</b>	Minimum: 50mm x 50mm Maximum: 510mm x 450mm
<b>Files Required</b>	Placement File (Excel or CSV), Bill of Materials (BOM)
<b>Inspection Method</b>	3D AOI & SPI / Manual

# SMT Production Line-1 Layout



# SMT Production Line-2 Layout



# SMT Production Line-3 Layout



# SMT Production Line-4 Layout



# Reflow Ovens



- Fully Automatic
- Smart Heating Profile Management
- Efficient Heating

Reflow Oven-1	8+2 Zone
Reflow Oven-2	8+1 Zone

# Quality Assurance and Reliability through Rigorous Inspection Protocols



Higher precision. Higher Speed.  
Next-generation 3D automatic optical inspection.

**RV-2-3DH**

**JUKI**  
JUKI Smart Solutions

At our PCB assembly business, we recognize that quality, reliability, and compliance are paramount to our clients. To address these critical concerns, we have instituted stringent Standard Operating Procedures (SOPs) for our inspection processes.

Post-manufacturing, each PCB undergoes a thorough inspection process that includes both Automated Optical Inspection (AOI) and meticulous manual inspection. This dual-layered approach ensures that every PCB meets our exacting standards. Our inspection process is designed to identify and rectify potential issues such as dry solder joints, missing components, tombstoning, and other common defects.

By integrating advanced AOI technology with detailed manual inspection, we ensure that each PCB not only complies with industry standards but also performs reliably in its intended application.

---

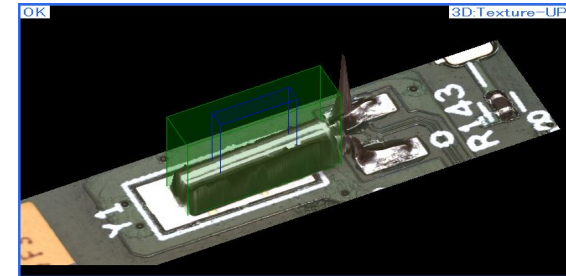
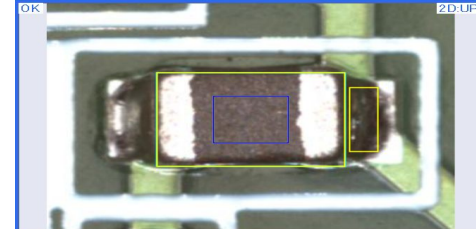
# Ensuring Precision and Quality with the Juki RV2-3DH

Our state-of-the-art Juki RV2-3DH (3D AOI & SPI) machine is equipped with high-resolution cameras and intelligent software, meticulously verifying each component's presence, position, and orientation post-placement. This comprehensive verification process allows us to identify and rectify potential errors, ensuring unmatched quality and reliability.

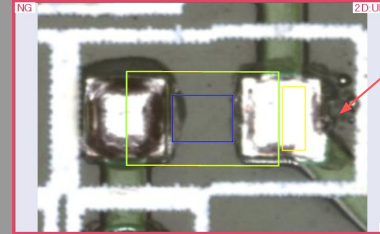
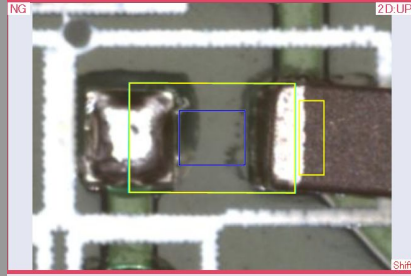
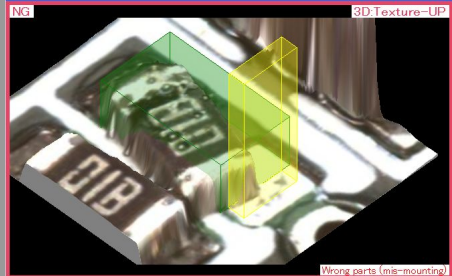
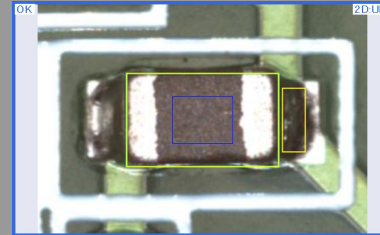
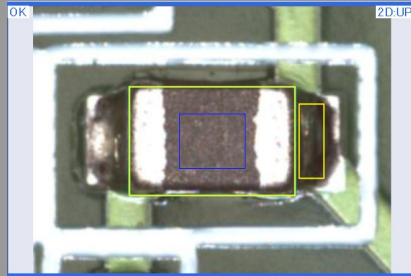
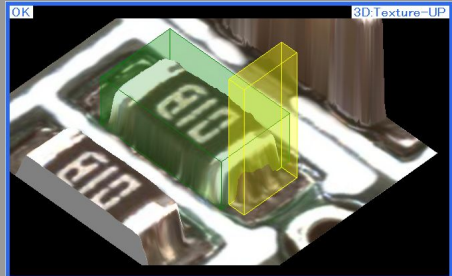
## Key Benefits:

- **Error Detection:** The Juki RV2-3DH excels at detecting issues such as missing components, component shifts, tombstoning, incorrect polarity/orientation, lead floating, solder shorting, and dry solder joints. This ensures that each PCB meets our rigorous quality standards.
- **Complex Component Handling:** The machine handles all types of complex components with ease, including connectors, ICs with small lead spacing, and reflective components like crystal oscillators. This capability ensures precise placement and reliable performance for all components.

By leveraging the advanced features of the Juki RV2-3DH, we ensure that our PCB assembly process is efficient, accurate, and of the highest quality, delivering superior products to our clients.



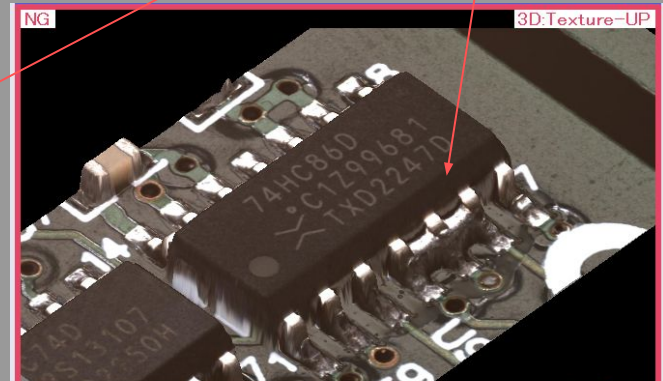
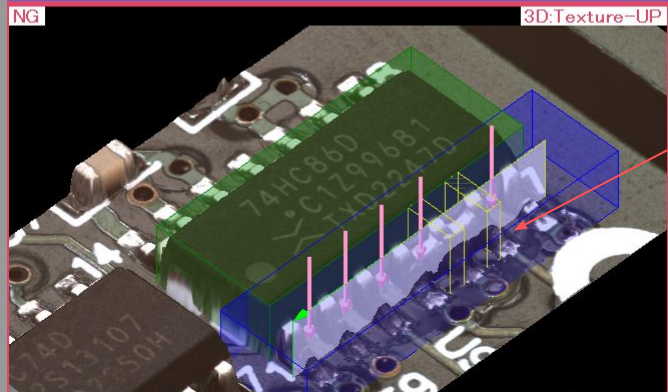
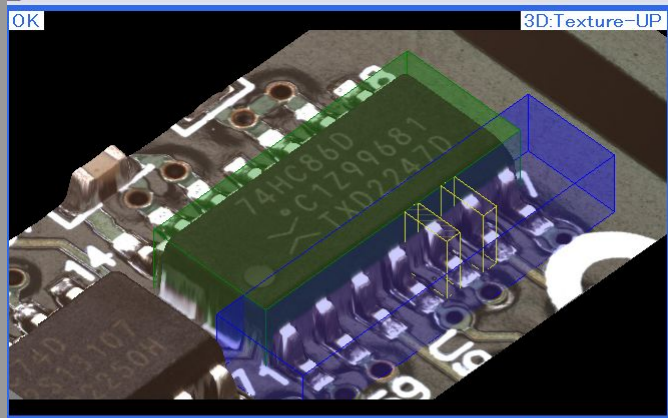
# Various types of fault detection by JUKI AOI



Missing Component  
Detection

Component Shift Detection

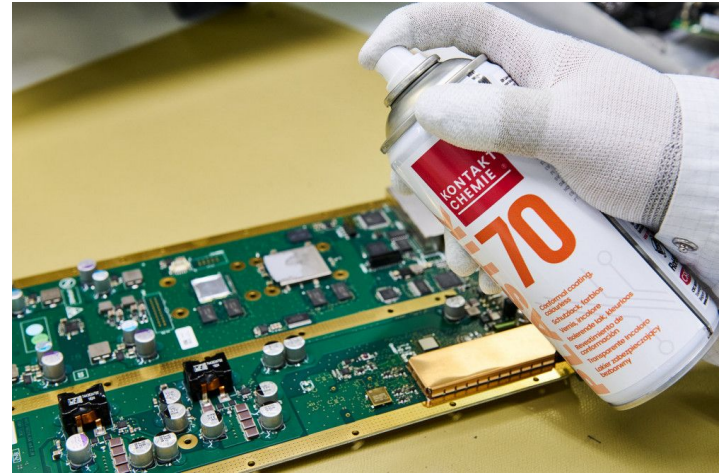
# Various types of fault detection by JUKI AOI



# Post PCBA Processes:

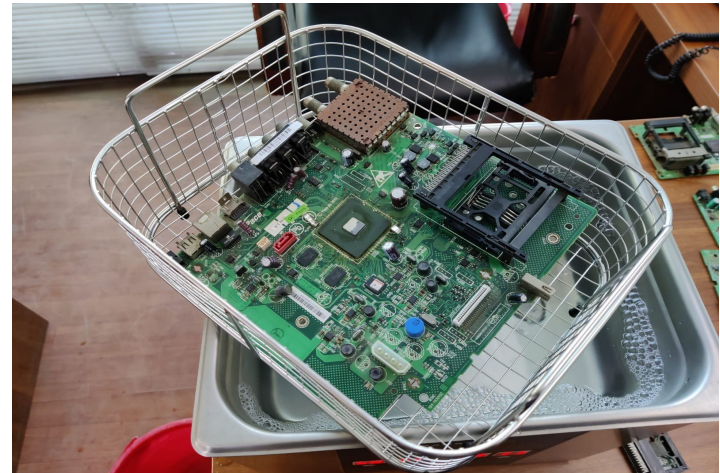
## 1. Conformal Coating:

Protects PCBs from environmental factors and corrosion thus extending the working life of a PCB.



## 2. Ultrasonic Cleaning:

Removes residual flux and other contaminants present on the PCB.



---

# SECTORS/ INDUSTRIES WE HAVE AND ARE CURRENTLY SERVING



TELECOM



SECURITY



IoT



INDUSTRIAL



CONSUMER



MEDICAL



AUTOMOTIVE/EV

---

# Contact Us

Plot No. 34, GIDC Waghodia,  
Waghodia, Vadodara-391760

---

## **Paresh Rupera (MD)**

+91 9824067427

paeshrupera@accuraelectronics.com

paeshrupera@gmail.com

accuraelectronics@gmail.com

## **Dhrumil Rupera (Procurement & QC)**

+91 9106649070

dhrumilrupera@gmail.com